

# **AIA National Component**

## **Organizational Charts**

First Quarter 2009

Updated 1.15.09

EVP/CEO  
**Christine W. McEntee**

Sr. Director, Executive  
Office Operations  
**Carolyn Lanham**

**Stacey Johnson**  
½ Executive Assistant,  
Exec. Office Operations

**Camden Walker**  
Executive Assistant to  
the CEO

VP  
Human Resources  
**Michael Hoagland**

VP and General  
Counsel  
**Jay Stephens**

VP, Administration &  
CFO  
**Tracy Harris**

VP  
Gov't & Community  
Relations  
**Paul Mendelsohn**

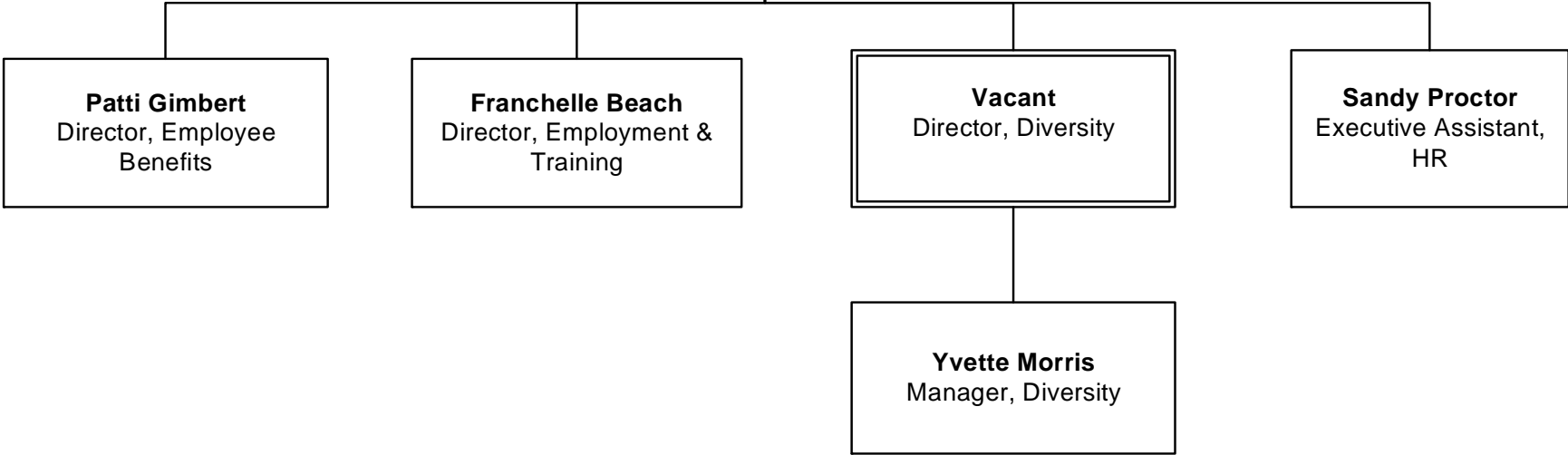
VP  
Knowledge &  
Professional Practice  
**Barb Sido**

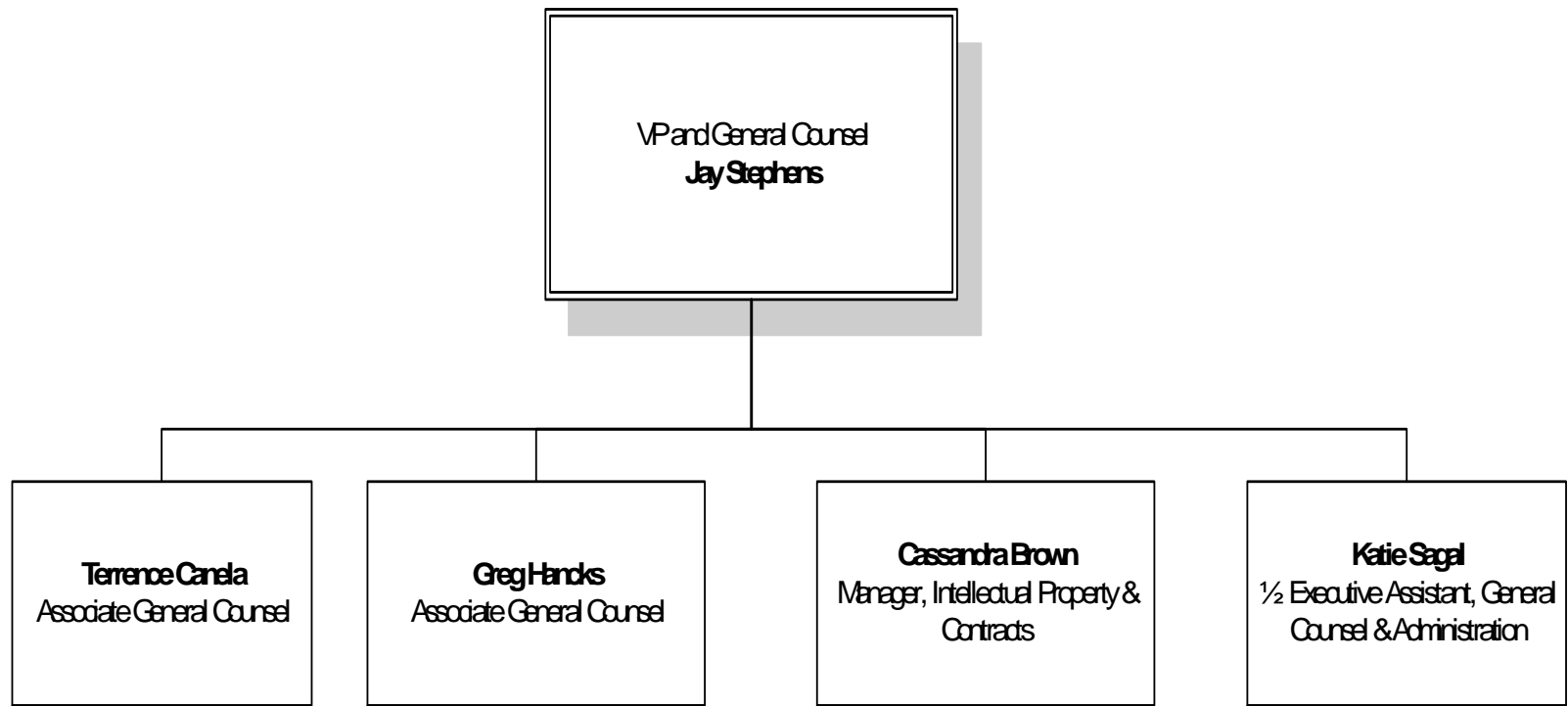
VP  
Member Value &  
Communications  
**Beth Bush**

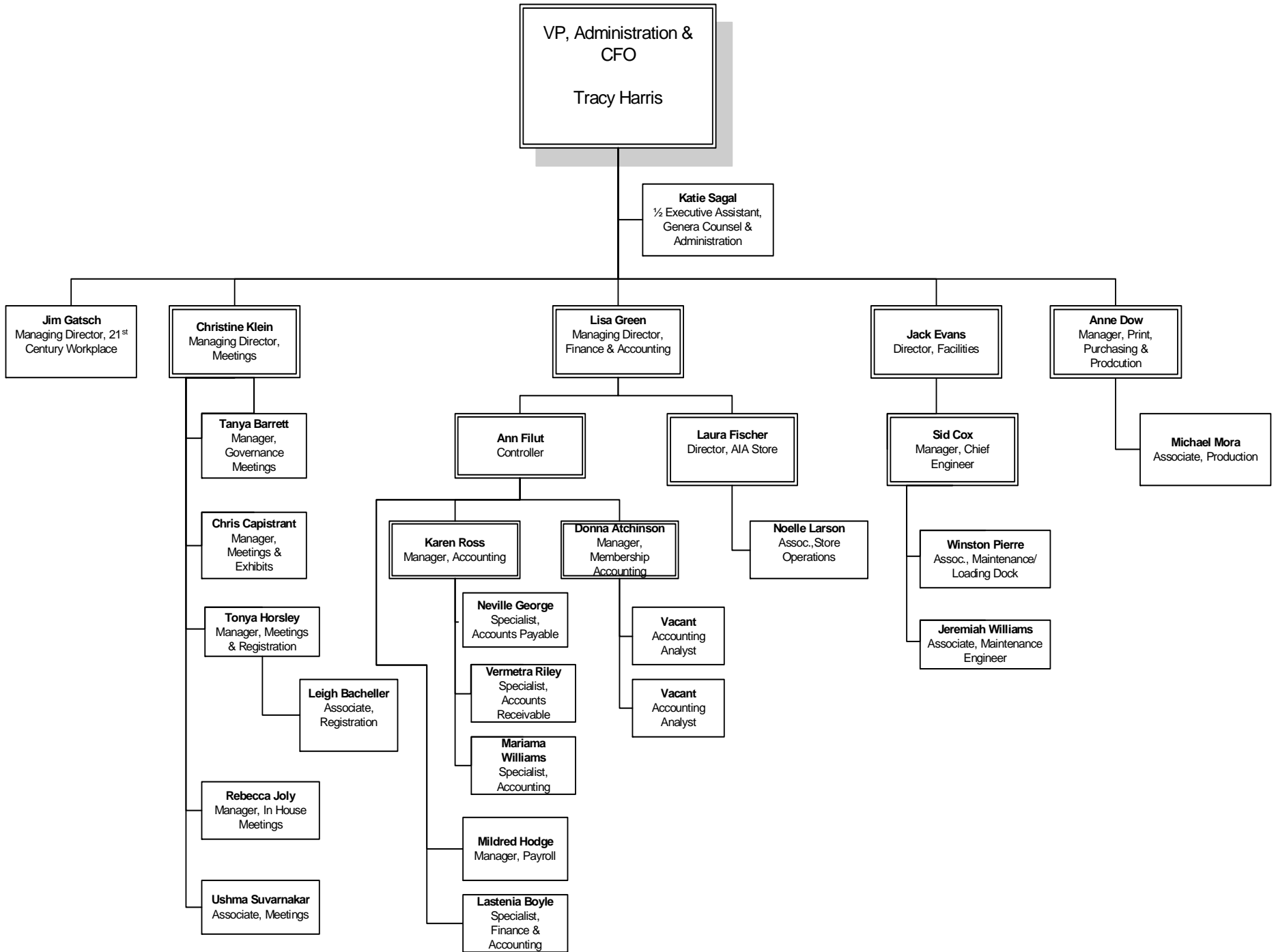
VP  
Strategy & Business  
Development  
**Elizabeth Stewart**

VP, Integrated  
Web Strategy &  
Technology  
**Kevin Novak**

VP  
Human Resources  
**Michael Hoagland, SPHR, CAE**

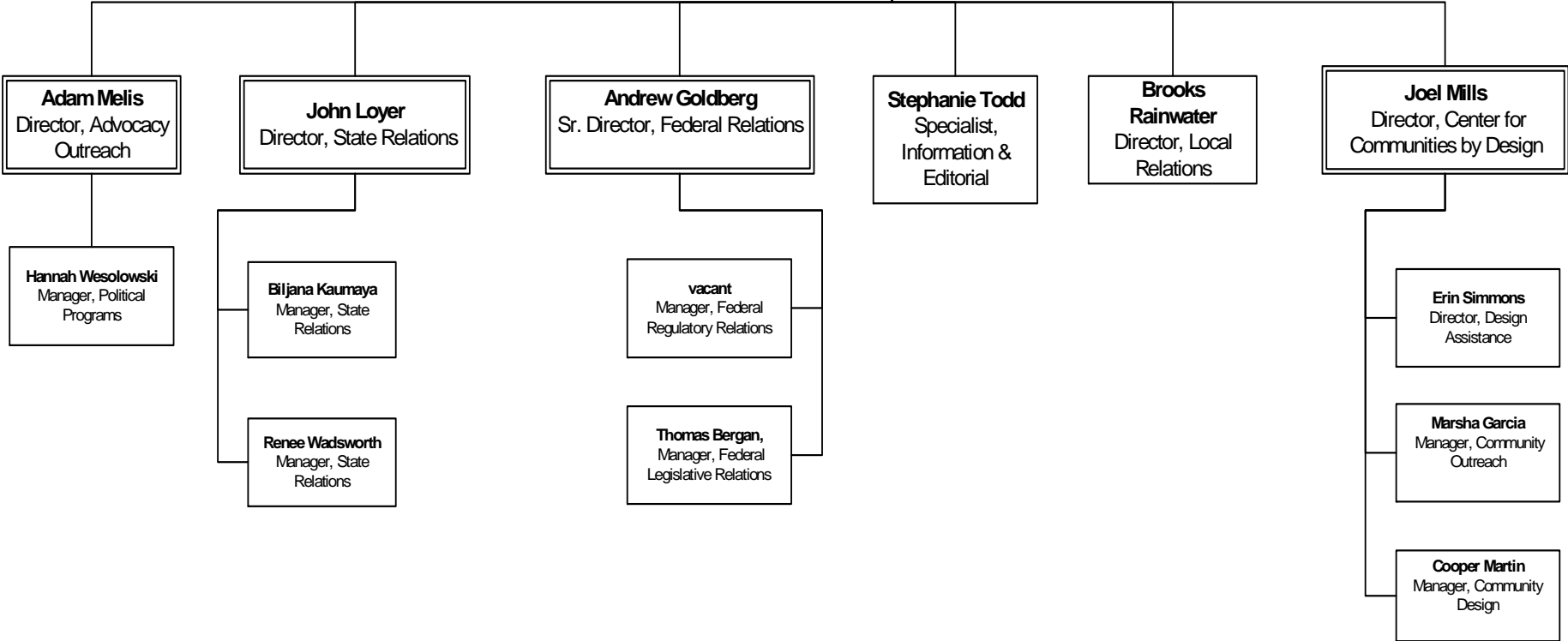






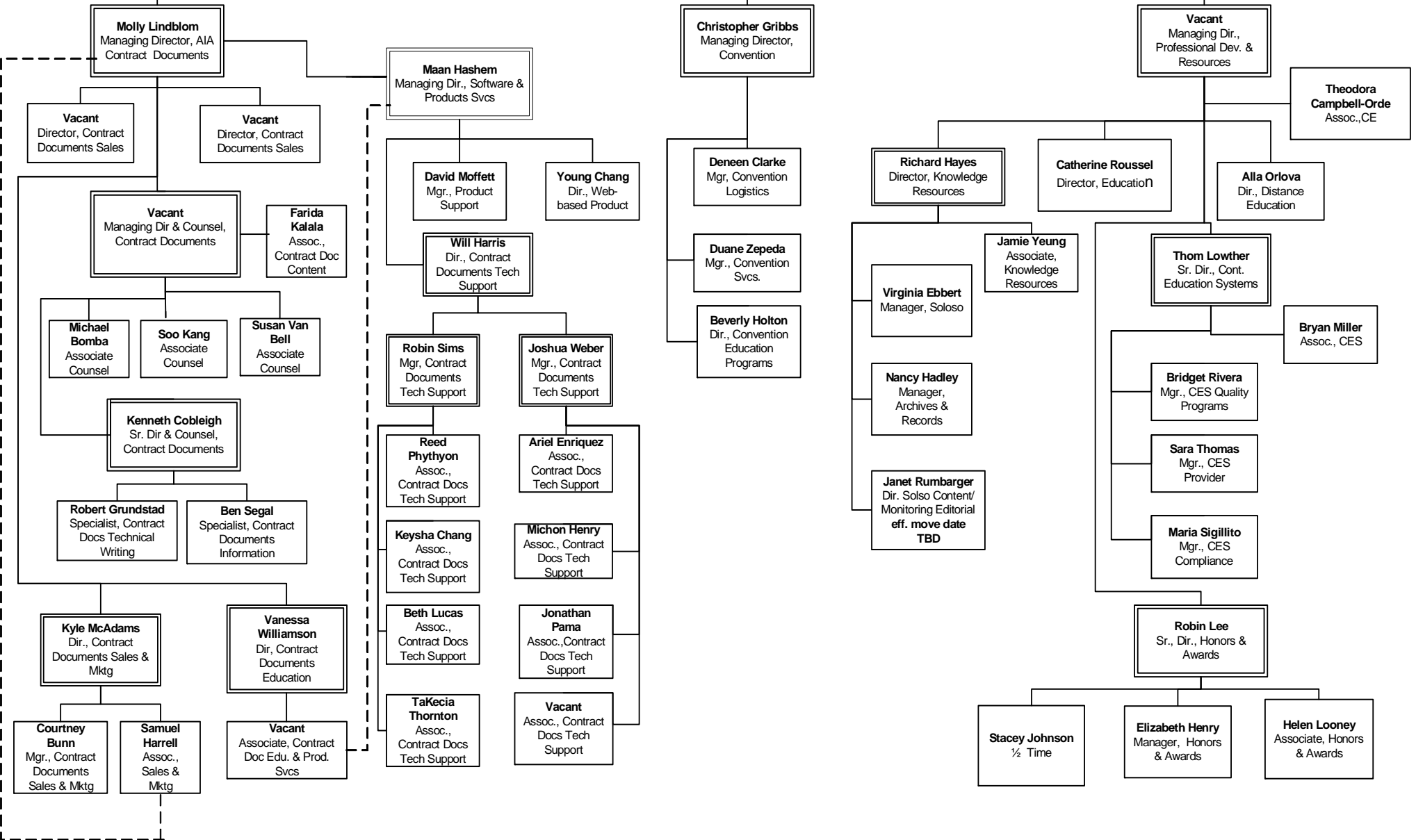
VP  
Gov't & Community Relations  
**Paul Mendelsohn**

**Robin Stevenson**  
Executive Assistant, Gov't  
& Community Relations



VP  
Knowledge & Professional  
Practice  
**Barb Sido**

**Kim Hamilton**  
Executive Assistant,  
Knowledge & Prof.  
Practice



VP, Member Value & Communications  
**Beth Bush**

**Kecia Jackson**  
Executive Assistant,  
Member Value & Communications

**Phi Simon**  
Managing Director,  
Communications & Mktg

**Terri Stewart**  
Managing Director,  
Member Communities

**Helene Dreiling**  
Managing Director,  
Component Relations

**Cedric Rush**  
Managing Director,  
Membership Strategy & Svcs

**Sybil Barnes**  
Director, Web Content Editor

**Ray Rhinehart**  
Sr Dir., Special Projects

**Margaret Pursell**  
Dir., Member Communications

**Stephanie Stubbs**  
Mgr., Member Comm. Editorial Content

**Doug Gordon**  
Mgr., Content Writer-Editor

**Russell Boniface**  
Specialist, Content-Writer Editor

**Zach Mortice**  
Specialist, Content-Writer Editor

**Scott Frank**  
Dir., Media Relations

**Matt Tinder**  
Specialist, Media Relations

**Glenn Ono**  
Director, Mkt. Communications

**Mary Anderson**  
Mgr., Copy Writer Editor

**Pam Del-Canto**  
Dir. Design Svcs

**Abner Gonsalves**  
Specialist, Mktg

**Christopher Grace**  
Associate, Comm & Mktg.

**Doug Paul**  
Director, Knowledge Communities

**Allison Fax**  
Associate, Member Communities

**Pauline Porter**  
Director, Member Communities

**Bruce Bland**  
Dir., Mbr Communities Ops

**Stephanie Burns**  
Mgr., Meetings

**Pablo de la Llama**  
Mgr., Comp. & Allied Org Outreach

**Amanda D'Luhy**  
Mgr., Mktg & Graphics

**Katherine Gupman**  
Mgr., Content Capture & Delivery

**Jessica Pearce**  
Mgr., Meetings

**Zach Porter**  
Specialist, Communications

**Kathleen Simpson**  
Mgr., Communications

**Jaclyn Toole**  
Director, Member Communities

**Pat Harris**  
Director, Component Programs & Events

**Karen 'KC' Harrison**  
Director, Component Support

**Dawn Quisenberry**  
Director, Component Support

**Kim Jackson**  
Associate, Component Relations

**Suzanne Rogers**  
Sr. Dir., Membership Strategy

**Susan Parrish**  
Manager, Initiatives

**Lindsay Witt,**  
Specialist, Component Support & Reporting

**Carol Madden**  
Sr. Dir., Membership Ops & Svcs

**Bill Diehl,**  
Manager, Membership Processing

**Bryan Lipps**  
Manager, Information Central

**Jackie Der**  
Assoc., Member Svcs

**Kathy Detgen**  
Assoc. Member Svcs.

**William Griffith**  
Assoc. Member Svcs.

**Vanessa White**  
Assoc., Member Svcs.

**Veletta Crawford**  
Assoc., Info. Ctrl.

**Adonna Cox**  
Assoc. Info Ctrl

**Alison Karfeld**  
Assoc. Info Ctrl

**Andean Crossman**  
Assoc. Info Ctrl

