



Architecture Billings Index (ABI)

December 2022

The Architecture Billings Index (ABI) is a diffusion index derived from the monthly Work-on-the-Boards survey, conducted by the AIA Economics & Market Research Group. The ABI serves as a leading economic indicator that leads nonresidential construction activity by approximately 9-12 months. The survey panel asks participants whether their billings increased, decreased, or stayed the same in the month that just ended. According to the proportion of respondents choosing each option, a score is generated, which represents an index value for each month. An index score of 50 represents no change in firm billings from the previous month, a score above 50 indicates an increase in firm billings from the previous month, and a score below 50 indicates a decline in firm billings from the previous month.

*All graphs represent data from December 2021–December 2022.

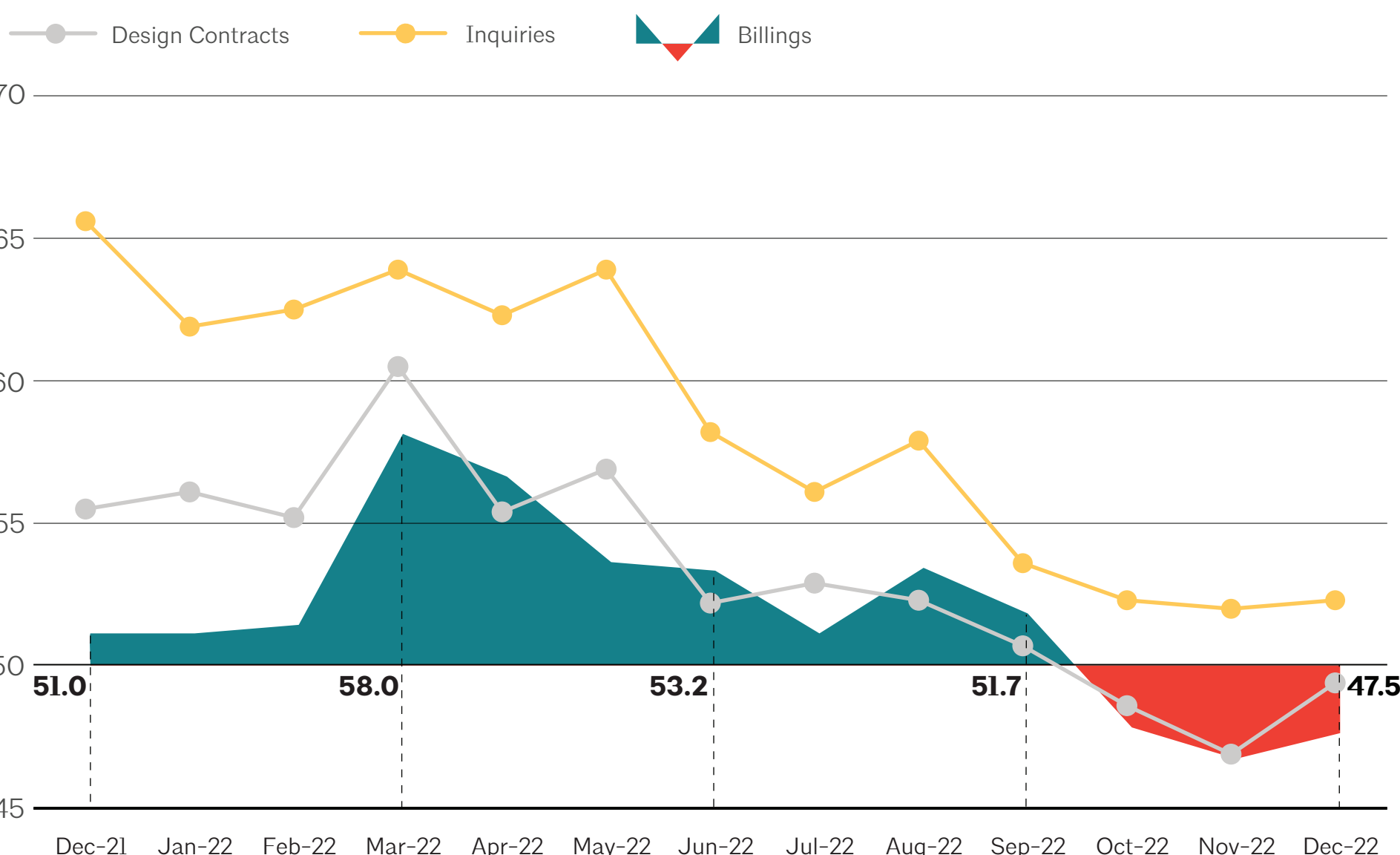
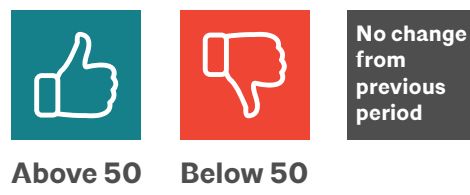
ABI

National Regional Sector Practice

National

Architecture firm billings continue to soften

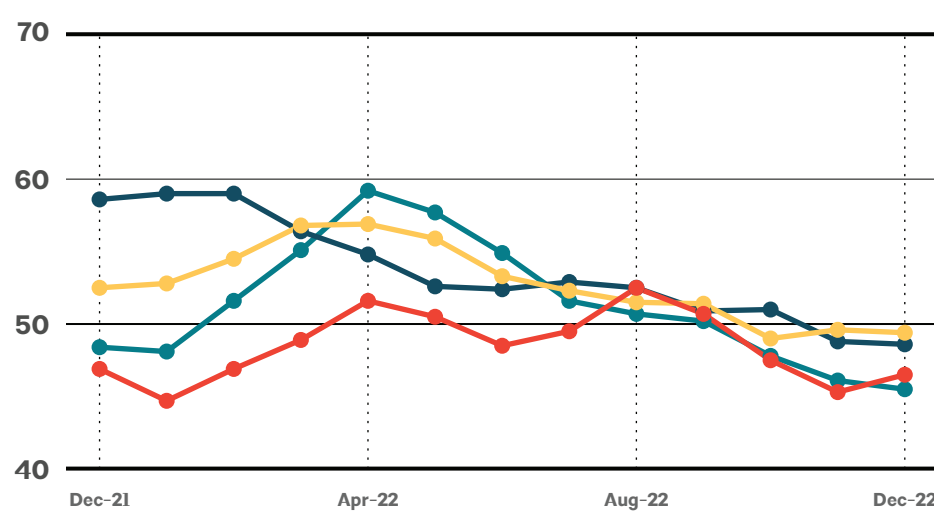
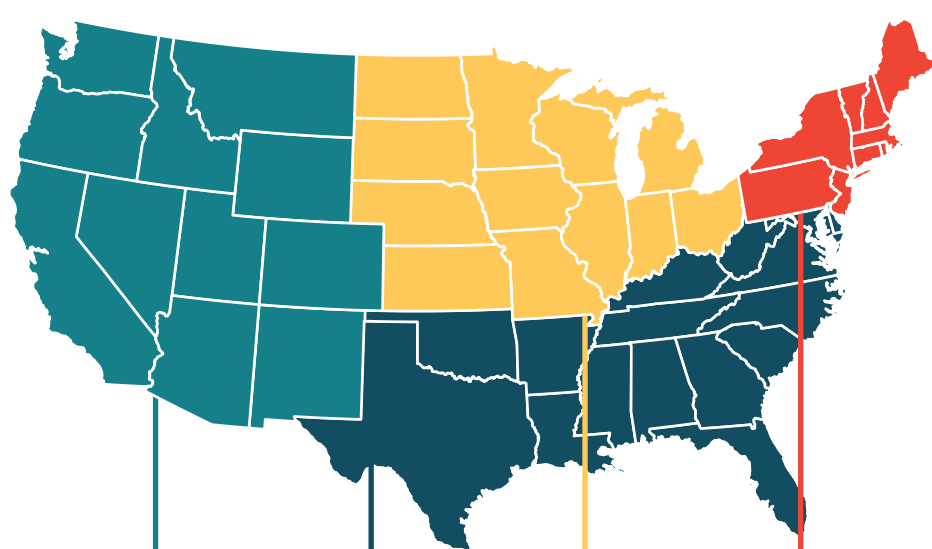
Graphs represent data from December 2021–December 2022.



Regional

Business conditions remain weak in all regions of the country

Graphs represent data from December 2021–December 2022 across the four regions. 50 represents the diffusion center. A score of 50 equals no change from the previous month. Above 50 shows increase; Below 50 shows decrease. 3-month moving average.



West: 45.5

Midwest: 49.4

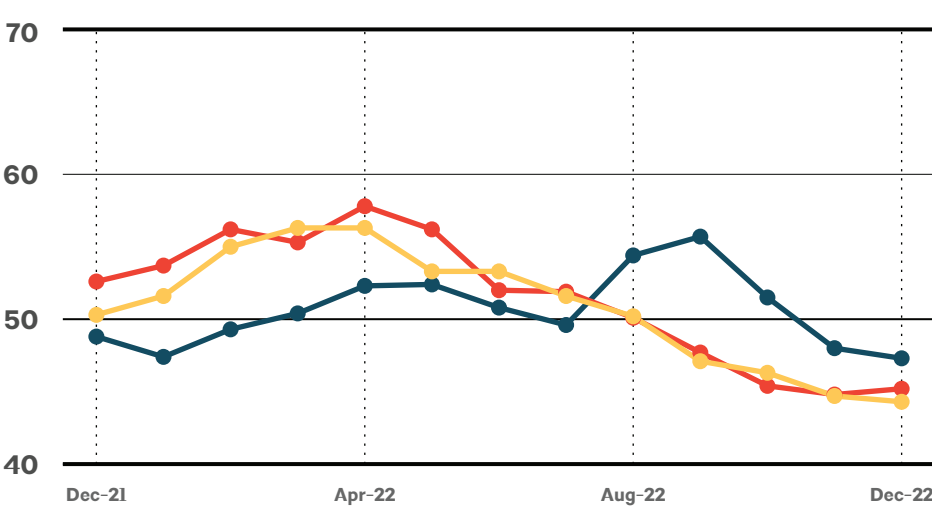
South: 48.6

Northeast: 46.5

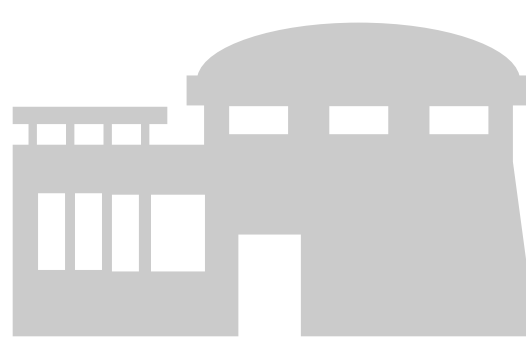
Sector

All firm specializations report declining billings

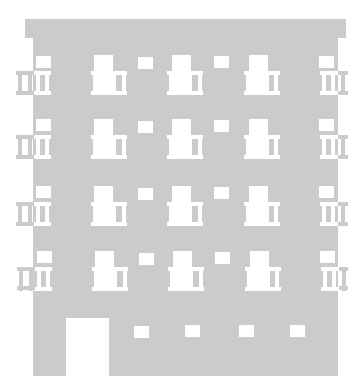
Graphs represent data from December 2021–December 2022 across the three sectors. 50 represents the diffusion center. A score of 50 equals no change from the previous month. Above 50 shows increase; Below 50 shows decrease. 3-month moving average.



Commercial/Industrial: 45.2



Institutional: 47.3



Residential: 44.3

Practice

Nearly four in ten firms report an increase in significantly delayed projects at their firm over the past six months

units: Trend in share of projects at firms (on a dollar basis) in each category over the past six months

